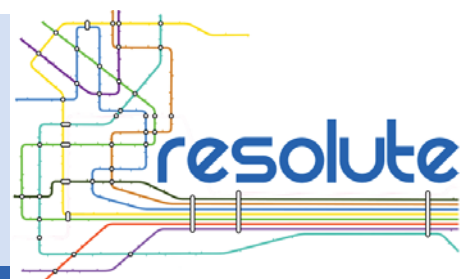


Newsletter 1

April 2016



RESOLUTE project

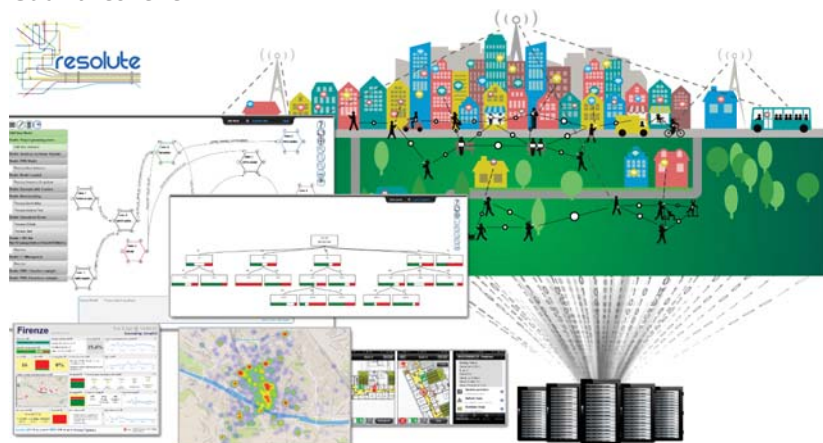
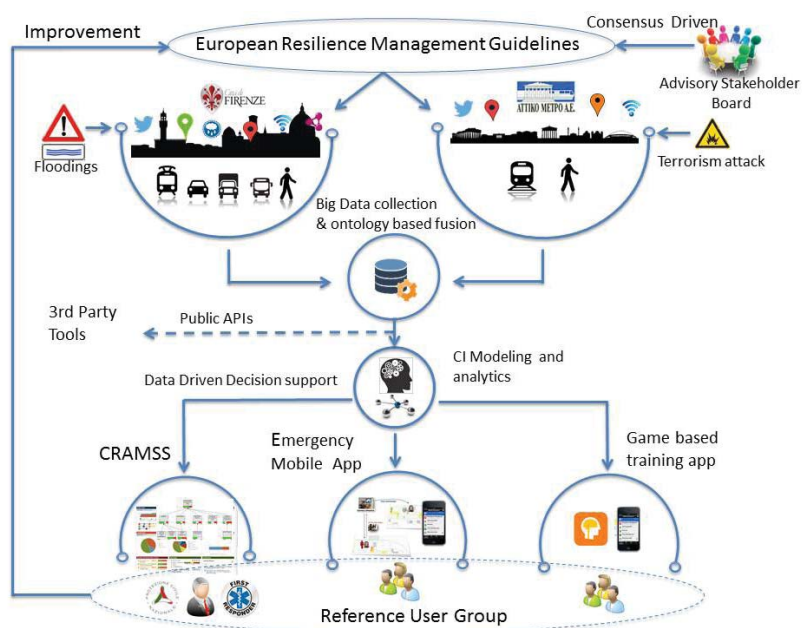
RESilience management guidelines and Operationalization applied to Urban Transport Environment

RESOLUTE is based on the vision of achieving **higher resilience of operations in European UTS**, based on the intrinsic robustness of infrastructure and public services, capacity of setting up backups and bidirectional and fair communication among institutions, utilities and the public. RESOLUTE recognises the ongoing transformation of urban environments in view of ecological, human and overall safety and security needs, as well as the growing importance of mobility within every human activity.

Resilience must be recognised as crucial across all economic and social domains. Among many things, this requires overall heightened operational efficiency, mainly by optimising the allocation and utilisation of available resources (organisational technical and human), whilst striving to continuously minimise any source of waste, namely incidents, accidents and other operational failures.

Within this context, RESOLUTE will aim at:

- 1. Conducting a systematic review and assessment of the state of the art of the resilience assessment and management concepts, national guidelines and their implementation strategies in order to develop a conceptual framework for creating/maintaining Urban Transport Systems**
- 2. Developing European Resilience Management Guidelines (ERMG)**
- 3. Operationalizing and validating the ERMG** by implementing the RESOLUTE Collaborative Resilience Assessment and Management Support Systems (CRAMSS) for Urban Transport Systems addressing Road and Urban Rail Infrastructures
- 4. Enhancing resilience** through improved support of human decision making processes, particularly by training professionals and civil users on the ERMG and the RESOLUTE system
- 5. Adopting of the ERMG** at EU and Associated Countries level



Meet RESOLUTE at TRA conference!

RESOLUTE will be present at TRA conference in Warsaw, Poland, from 18 to 21 April. Meet us on the conference exhibition to discuss Resilience issues!

<http://www.resolute-eu.org/index.php/2015-07-16-15-29-23/calendar/icalrepeat.detail/2016/04/18/9/-/transport-research-arena>

First project workshop

Proceedings available!

Check out the website deliverable page to download the last 15 December 2015 workshop proceedings! The RESOLUTE team is available to answer your questions on this event.

<http://www.resolute-eu.org/index.php/deliverables>



resolute-eu.org



@Resolute_eu
#Resolute_eu
#ERMG



Resolute European Project



RESOLUTE



**First RESOLUTE workshop
15 December 2015, Florence, Italy**

Two of the most important products of RESOLUTE are the European Resilience Management Guidelines (ERMG) as well as the Collaborative Resilience Assessment and Management Support System (CRAMSS).

The workshop was organized on **15 December 2015 in Florence, Italy**. It was held in the historic seat of Florence Tribunal, down town, near Palazzo Vecchio, the Badia Fiorentina, the Bargello. The place was offered by the Commune of Florence's courtesy. The area is traditionally home to central public institutions. The workshop gathered **56 participants** from the project consortium and stakeholders.

Information, knowledge and experiences gathered during RESOLUTE 1st workshop constitutes an important first contact with transport operators and stakeholders, in particular those involved in the preparation of the testing and validation scenarios. Workshop data is structured around the adaptive cycle / event management cycle principles in order to collect needs and requirements for the operational point of view from the stakeholders. In particular **6 threat scenarios** have been identified:

- water bomb
- 30 years flooding and 200 years flooding
- street accidents
- bomb attack in the tube
- large yard critical event.
-

These scenarios were used to **harvest processes, data sources - both ICT systems and human** - and responsibilities for each step of the adaptive cycle in order to guide the guidelines definition and the development of the tools. According to the workshop results the test sites can be characterised by a number of characteristics that will further serve during the current phase of RESOLUTE in order to begin the demonstration and validation of the planned integrated system of mobility management which, besides forecasting, will involve a corrective strategy actuation for restoring of safety condition for system users and of effectiveness of the public transport network in case of emergency event.

All conclusions are available on the project website: <http://www.resolute-eu.org/index.php/deliverables>



Project Coordinator:
Prof. Paolo Nesi PhD - paolo.nesi@unifi.it
Dr. Emanuele Bellini PhD - emanuele.bellini@unifi.it
University of Florence - DISIT Lab - www.disit.org
Publisher: RESOLUTE consortium
Concept and editing: RESOLUTE consortium
Design and Layout: L. Mendoza (HUMANIST VCE)

For any further information please contact:
infores@resolute-eu.org

The RESOLUTE project is funded under the Horizon 2020 Programme
Start date: 1 May 2015
Duration: 36 months
Grant Agreement n° 653460

RESOLUTE Newsletter reflects the author's view only and the European Community is not liable for any use that may be made of the information contained therein.

